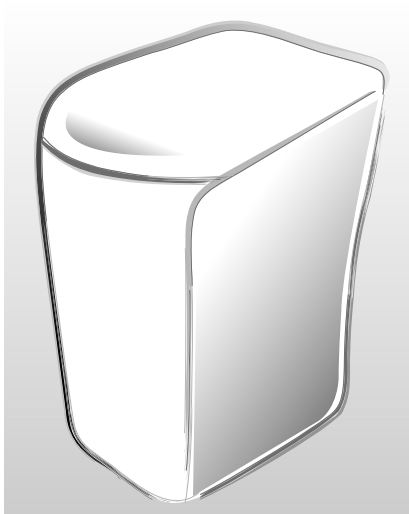




WASHING MACHINE

User's Manual



*Please read this manual before using and note how to use in the proper manner.
Please be careful of keeping the manual.
Otherwise, it should be bought separately.*

FEATURES	1
SAFETY INSTRUCTIONS	2
DESCRIPTION OF PARTS	3
CONTROL PANEL	4
WASHING PROCEDURE	5
Fuzzy(Digital) course	5
Blanket course	5
Super clean course	5
Speedy course	5
Wool course	5
Delay start course	6
Silver Wash button	6
MANUAL FUNCTIONS	7
INSTALLATION & MAINTENANCE	8
Environment	8
Levelling	8
Connecting the water supply hose	8
Assembling the rat protection panel	9
In case of pump-drained washer	9
Connecting the drain hose	9
How to put the detergent in	9
Water supply connector filter	10
Cleaning the filter net.	10
How to clean the filter	10
TROUBLESHOOTING	11
SPECIFICATIONS	

*The User's Manual is for common use.
Make use of the User's Manual depending upon your washing machine model.*

Register your product at
www.samsung.com/global/register

CODE NO. : DC68-02196A

FEATURES

THE SILVER WASH SYSTEM

- This is a wash control system that enables to kill bacteria hidden in the cloth during the wash or rinse, to protect human skin from harmful bacteria through the antibiotic coating by SILVER WASH, and to realize a pleasant, healthy sanitization.
- This system also prevents propagation of bacteria through antibiotic coating on the washed cloth.

FUZZY(DIGITAL) CONTROL

- Fuzzy control operates with best washing course by sensing the washload like artificial intelligence.

TRANSPARENT WINDOW

- This Transparent Window is the new concept to solve the curiosity of users to see inside of washing machine while operation.
- While operation, the laundry progress inside of washing machine can be checked by looking through the transparent window.

PULSATOR

- The Pulsator helps water and detergent to go through fabrics efficiently while providing both the powerful water action to clean larger and heavier clothes and the gentle water action to clean all delicates with less wear and tear on clothes.

WATERFALL FLOW

- The Waterfall Flow injected from under the pulsator cascades with full force back into the tub, pushing down any clothes that float right under the water surface. It is this Waterfall Flow that enables this washing machine to effectively wash large and heavy items, such as bluejeans and blankets.

MAGIC FILTER

- This unique magic Filter ensures that all the lint inside the tub is captured for top quality filtering results to deliver consistently effective cleaning results.

SUPER CLEAN

- Use for clean washing.
- Water is supplied to moderate level and then five times more while washing.

AUTO RESTART

- The power is turned on automatically after power failure.

CHILD-LOCK FUNCTION

This is a device to protect children from being accidentally hurt while playing with the washer.

- How to start the Child-Lock function:
 - Press the "Power" button to go to an initial washing mode.
 - By pressing "Start/Hold" button, you start washing and in case Child Lock function is needed during the laundry
 - Press both the "Water level" and "Function" buttons at the same times.(for 3 seconds)
(Note: You cannot perform the function without the "Power" button on.)
- In the event that you would like to modify the Child-Lock function, "L" signal flashes in the "signal window showing the rest of the set time" every two seconds, which means it is locked and indicates how much time is left until the function is released.
- To release the function of Child-Lock:
 - In case the "Child-Lock" is programmed, press both the "Function" and "Water level" buttons at the same time.

SAFETY INSTRUCTIONS

Please note that the following precautions for safety intend to prevent unpredictable danger and damage by helping the proper use in safety.

When using hot water in washing, please make sure that the water should not exceed 50°C.

- Plastic parts may be deformed or damaged, and an electric shock or a fire may take place.


WARNING

There might be serious injury or fatal accident when you violate this instruction.

- If the plug (power supply cord) is damaged, it must be replaced by the manufacturer or its service agent or a similarly qualified person in order to avoid a hazard.
- Do not pull the cord off or touch it with moist hands.
-An electric shock or a fire may take place.
- Do not bend the power supply cord by force or press it with heavy things.
-An electric shock or a fire may take place.
- Do not install the washer nearby electric implement or don't put a candle light or cigarette light on the washer.
-A fire may take place.
- Do not disassemble, repair or remodel it recklessly.
-When you need to repair it, please call service agent. An electric shock or a fire may take place.
- During operation, do not put your hands or metal materials under the washer.
-You may be hurt by spinning board beneath the washer.
- Stay away from the washer when the bottom of the washer sinks into the water.
-There might be an electric shock. Please wait until the water drains out completely.
- Do not put laundry stained with gasoline, benzene, or alcohol in the washer, and keep the materials away from the washer.
-An explosion or a fire may take place.
- During spinning, don't put your hand in the spinning tub.
-It may hurt your hands. If it does not stop within 15 seconds after you open the lid, call service agent immediately.
- This appliance is not intended for use by young children or infirm persons unless they have been adequately supervised by a responsible person to ensure that they can use the appliance safely. Young children should be supervised to ensure that they do not play with the appliance.
- This appliance has to be connected to the plug endurable to proper power consumption.
- This appliance has to be positioned so that the plug is accessible after installation.

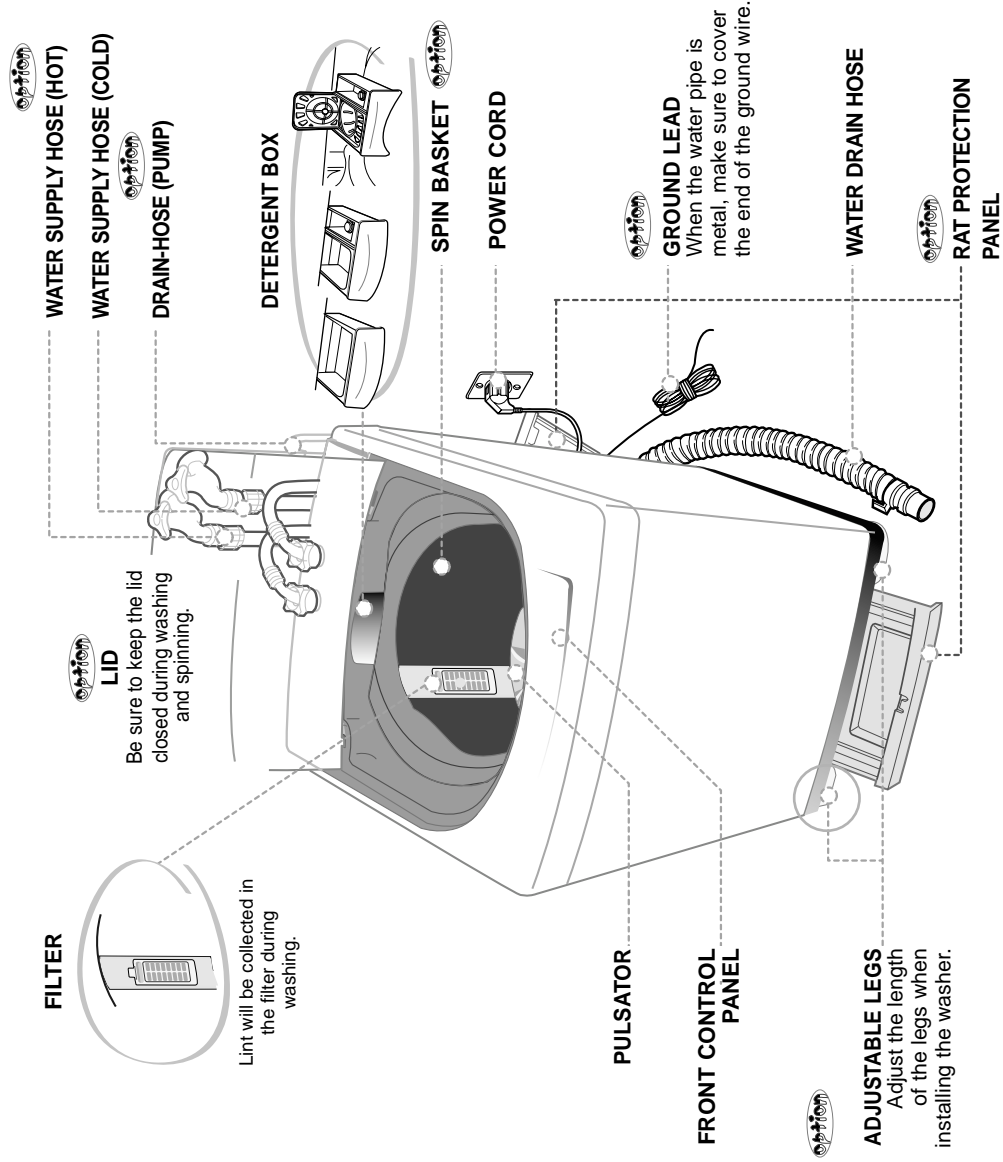
CAUTIONS

There might be a slight injury or damage when you violate this instruction.

- Don't install it in the area with moisture or outdoor where it has rain or snow
-An electric shock or a fire may take place.
- Please unplug the power supply cord when you do not use it.
-An electric shock or a fire may take place.
- If there is dust or water on the power supply plug and its connected part, please remove it completely.
-An electric shock or a fire may take place.
- Do not make your kids look into the inside of the washer.
-If your kid falls into the washer, his life could be in danger.
- Ventilate immediately without touching the power plug if gas is leaking.
-An electric shock or a fire may take place if it catches flame.
- If the washer makes strange noise, smell or smoke, unplug it promptly and call service agent.
-An electric shock or a fire may take place.
- When cleaning, don't spray water to the parts of the washer directly.
-It may make its life span shorten. Also an electric shock or fire may take place
- Don't use several appliances together with an outlet.
-A fire may take place due to unusual heat.
- Don't press the button with an awl or pin.
-An electric shock or a fire may take place.
- Use the new hose-sets and old hose-sets should not be reused.
- Connect the grounding wire to the shell plate, and bury it under at least 25cm of earth: alternatively, connect the ground wire to the appropriate pin on a properly grounded power receptacle. Never connect the wire to a telephone line, lightning rod, or gas pipe. 

DESCRIPTION OF PARTS

The User's Manual is for common use.
Make use of the User's Manual depending upon your washing machine model.



CONTROL PANEL

For more details, see control panel of your washing machine.

➤ POWER BUTTON

Press this button once to operate.
Press once again to turn the power off.



➤ START/HOLD BUTTON

Use to pause and restart the operation.
To change the washing procedure during operation, press this button to stop,
and once again to restart after changing the procedure.



➤ DELAY START BUTTON

Press this button when delay start washing is needed.



➤ COURSE SELECT BUTTON

With every press of this button, the washing course changes;
FUZZY(DIGITAL) → BLANKET → SUPER CLEAN → SPEEDY → WOOL → FUZZY(DIGITAL)



➤ SILVER WASH BUTTON

A course where silver water is supplied in washing as well as the last rinse,
featuring sterilization and antibacterial coating.

- This is available for all courses except the Wool course.



➤ FUNCTION SELECT BUTTON

With every press of this button, the function changes:
SOAK&WASH&RINSE&SPIN → WASH → RINSE → SPIN → WASH&RINSE → RINSE&SPIN →
WASH&RINSE&SPIN → SOAK&WASH&RINSE&SPIN



➤ WATER LEVEL SELECT BUTTON

According to the washload,select the water level ;
MEDIUM → HIGH → MAXIMUM → EXTRA LOW → LOW



➤ WATER SUPPLY SELECT BUTTON

As you press this button, the type of water is selected as follows.
COLD → COLD + HOT → HOT → COLD



➤ REMAINING TIME INDICATOR LIGHT

The indicator light shows the remaining time (in minutes) of each wash cycle.
At the end of the cycle,the power automatically switches off.

WASHING PROCEDURE

Before starting washing, check the following:

Connect the water supply hose to the water tap. Leave a tap open. Plug the power cord in. Make sure to lay down the drain hose. (In case no drain pump)

Put the laundry into the washer and add detergent, too.

Be careful not to overload. Use right detergent for the fabrics you are washing.

➤ FUZZY(DIGITAL) COURSE

Selects the best washing course automatically.



1. Press the POWER Button to "ON".
2. Press the START/HOLD button.
*Water level is selected automatically.
Washing, rinsing, and spinning follow.
If you want to pause, press the START/HOLD button again. You can change the course when paused.*
3. Close the lid.
* Select the Silver Wash button to perform anti-bacteria washing.

➤ BLANKET COURSE



1. Press the power button to "ON".
2. Press the course select button once.
3. Press the START/HOLD button.
*Water level is selected automatically.
Washing, rinsing, and spinning follow.
If you want to pause, press the START/HOLD button again. You can change the course when paused.*
4. Close the lid.
* Select the Silver Wash button to perform anti-bacteria washing.

➤ SUPER CLEAN COURSE



Use for cleaner washing.

1. Press the power button to "ON".
2. Press the course select button two times.
3. Press the START/HOLD button and put the proper amount of detergent into tub.
*Water level is selected automatically.
Water level is only selected MAXIMUM ~ MEDIUM.*
4. Close the lid.
The washing finishes by the time you reserved.
* The tempering feature is included in the Super Clean course. This is why the additional tempering course is not selected.
* Select the Silver Wash button to perform anti-bacteria washing.

➤ SPEEDY COURSE

Because washing is speedy, it is good for light or less stained laundry.



1. Press the power button to "ON".
2. Press the course select button three times.
3. Press the START/HOLD button.
*Water level is selected automatically.
Washing, rinsing, and spinning follow.
If you want to pause, press the START/HOLD button again. You can change the course when paused.*
4. Close the lid.
* Select the Silver Wash button to perform anti-bacteria washing.

➤ WOOL COURSE



1. Press the power button to "ON".
2. Press the course select four times.
3. Press the START/HOLD button.
*Washing, rinsing, and spinning follow.
If you want to pause, press the START/HOLD button again. You can change the course when paused.*
4. Close the lid.

CAUTION . . .

- Do not use water above 30°C for WOOL washing.
- Refer to the tag attached on the clothes for washing information.
- Fasten buttons and turn inside out before washing.
- Use the detergent indicated in the laundry.
- When the degree of dirt is extreme, soak the laundry in warm water for about 10 minutes before pressing the WOOL course button in order to enhance washing efficiency.
- * In the Wool course, the Silver Wash course does not work as it could damage the washed items.

WASHING PROCEDURE



Select this course when

you have to go out or do something else.

1. Press the power button to "ON".
2. Press the course select button.
3. Press the DELAY START button once.

You may change the delay start time with use the DEALY START button. (from 3 hours to 18 hours)

4. Press the START/HOLD button and put the proper amount of detergent into tub.
5. Close the lid.

The washing finishes by the time you reserved.



A course where bacteria hidden

inside the laundry are removed before it is Silver Wash-coated for avoiding the propagation of harmful germs.

1. Press the power button to "ON".
2. Press the SILVER WASH button.
3. Press the START/HOLD button.
4. Close the lid.



- This can only be selected when WASH, RINSE and SPIN are all selected.

- When the Silver Wash course is selected, manually selecting the (function) keys is not allowed.

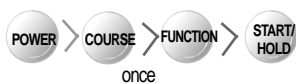
- This toggles On/Off each time the button is pressed.

- This is available as an option for all courses other than the Wool course.

MANUAL FUNCTIONS

Each washing course changes manually.

Ex) If you want to wash in the speedy course : Power - Select speedy course - Wash - Start/Hold button



SOAK FUNCTION (Including WASH, RINSE, SPIN)

Press the POWER button.

Select the course(Press the course button).

→ FUZZY(DIGITAL), BLANKET, SUPER CLEAN, SPEEDY, WOOL

Press the FUNCTION SELECT button once.

Press the START/HOLD button once.

Water level is selected automatically.

Washing, rinsing, and spinning follow.

* When the Silver Wash course is selected, the tempering feature is already included in this course so manually selecting Tempering is not allowed.



WASH ONLY

Press the POWER button.

Press the FUNCTION SELECT button twice.

Press the START/HOLD button once.

Washing goes on for 18 minutes.

When the FUNCTION button is pressed during washing, the wash time can be changed to between 3 and 25 minutes in duration.



RINSE ONLY

Press the FUNCTION button three times.

Press the START/HOLD button once.

Rinsing goes on for 15 minutes.

When the FUNCTION button is pressed during rinsing, the rinse times can be changed to between 1 to 5 times in duration.



SPIN ONLY

Press the FUNCTION button four times.

Press the START/HOLD button once.

Spin drying goes on for 11 minutes.

When the FUNCTION button is pressed during spinning, the spin time can be changed to from 1 to 7 minutes.



WASH AND RINSE

Press the FUNCTION button five times.

Press the START/HOLD button once.

Washing and rinsing go on for 38 minutes.

When the FUNCTION button is pressed during working, the rinse times can be changed to between 1 to 5 times in duration.



RINSE AND SPIN

Press the FUNCTION button six times.

Press the START/HOLD button once.

Rinsing and spin drying follow.

When the FUNCTION button is pressed during working, the rinse times can be changed to between 1 and 5 times in duration.

INSTALLATION & MAINTENANCE

The User's Manual is for common use.

Make use of the User's Manual depending upon your washing machine model.

ENVIRONMENT

Leave some space

Maintain at least 10cm between the washer and the wall.

Place the washer on a sturdy flat surface.

If the washer is placed on an uneven or weak surface, noise or vibration occurs. (Allowable is 1°)

Adjust the legs for even placement.

Never install the washer near water.

Do not place the washer in steamy rooms or where the washer is directly exposed to rain. Moisture may destroy the electrical insulation causing an electrical shock hazard.

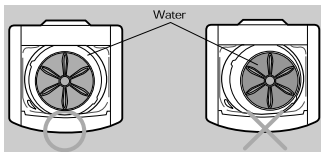
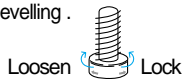
Avoid direct sunlight or heaters.



As plastic and electrical components are affected by direct heat, never place the washer near furnaces, boilers, etc. Do not place under direct sunlight.

- **LEVELLING** • If the washer is not leveled with the ground, it makes the machine tremble more or be out of order. So, make sure that the washer is leveled properly.

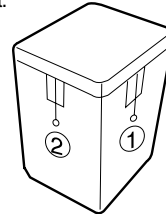
SEE IF THE MACHINE IS PLACED LEVEL BY CHECKING THE POSITION OF THE WASHING TUB.

- Open the lid of the machine, pour water into the tub up to the level just below the pulsator, and adjust the legs so that the pulsator is positioned at the center of the water as shown in the figure.
- Place the machine more than 10cm away from the wall.
- Adjust the legs on feet for levelling.



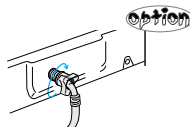
1. Adjust the side horizontally  first and the front in same direction  next.

2. If the thread is not within the limit, adjust the height of the legs.



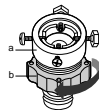
➤ CONNECTING THE WATER SUPPLY HOSE

1. Remove the adaptor from the water supply hose.



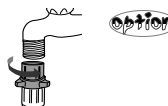
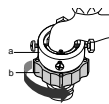
5. Connect the other end of the water supply hose to the inlet water valve at the back of the washer. Screw the hose clockwise all the way in.

2. First, using a "+" type screw driver, loosen the four screws on the adaptor. Next, take the adaptor and turn part (b) following the arrow for gap about 5mm between them.



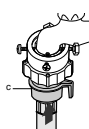
- 5-1. Connect the other end of the water supply hose to the inlet water valve at the top of the washer. Screw the hose clockwise all the way in.

3. Connect adaptor to the water tap by tightening the screws firmly. Then, turn part (b) following the arrow and put (a) and (b) together.



- If the water tap is a screw type, assemble a water supply hose that fits to the tap as shown.*

4. Connect the water supply hose to the adaptor. Pull down the part (c) of the water supply hose. When the part (c) is released, the hose is automatically connected to the adaptor making a 'click' sound.

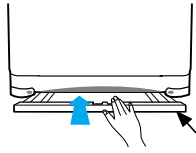


- NOTICE** After completing connection, if water leaks from the hose, then repeat the same steps. Use the most conventional type of faucet for water supply. In case the faucet is square or too big, remove the spacing ring before inserting the faucet into the adaptor.

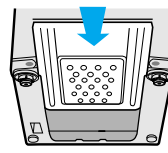
Note : The appliance is to be connected to the water mains using new hose-sets and that old hose-sets should not be used.

➤ **ASSEMBLING THE RAT PROTECTION PANEL** 

1. Insert the rat protection panel to the assembling hole on front side to the end.

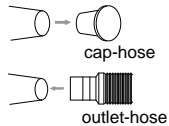


2. If you have difficulty inserting the panel lift up the washer a little and insert it

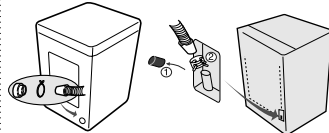


➤ **IN CASE OF PUMP-DRAINED WASHER** 

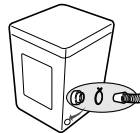
Take out the cap-hose and connect the outlet-hose.



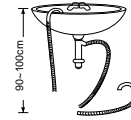
Be sure to join tightly the drain hose into the drain-outlet on the back of the machine.



Be sure to join tightly the drain hose into the drain-outlet on the side of the machine.

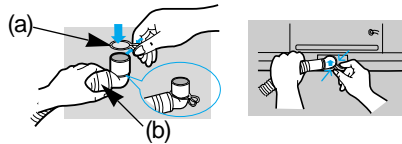


Install the drain hose in the position of about 90~100cm above the ground.



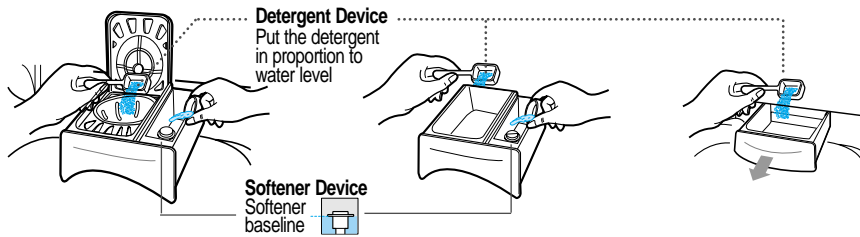
➤ **CONNECTING THE DRAIN HOSE**

After pressing the joint ring(a), insert the drain hose(b) to drain direction.



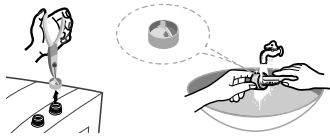
➤ **HOW TO PUT THE DETERGENT IN** 

1. Open the detergent box by pulling in the direction of the arrow as shown in the figure and then put the powder detergent in the detergent box.
2. Put in one-time amount of detergent evenly so the detergent may not brim over the box.

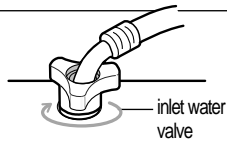


CAUTION : If softener is stored over the above base line, it may flow down at any time.

➤ **WATER SUPPLY CONNECTOR FILTER** 



1. Pull out the filter and wash well.

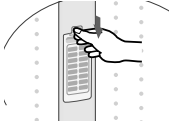


2. Pull in the filter and connect the hose to the inlet water valve tightly.

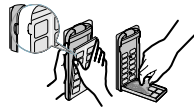


3. Check if there is a leakage. Note to tighten up the connector.

➤ **CLEANING THE FILTER NET** Clean the filter net often to keep the washer clean.



1. Push the upper part of the filter and pull in.



2. Open the cover as shown in the figure.



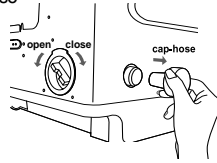
3. Clean the filter.



4. Close the cover and insert the lower part of the filter in the basket first and then push the filter with "click" sound .

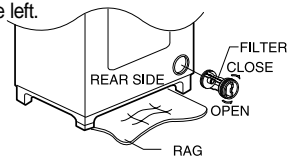
➤ **HOW TO CLEAN THE FILTER** 

1. Place a rag under the washer filter not to wet the floor.
2. Rotate the filter counterclockwise and pull out the filter.
3. Remove dirt and rotate the filter clockwise until it locks in position.



(pump drained washer)

1. Place a rag under washer filter not to wet the floor.
2. Turn the filter-cap to the left.
3. Take the filter out and remove dirt.
4. Reassemble in reverse order.



TROUBLESHOOTING

➤ Washing machine won't work

- Is the water tap opened?
- Is the washer plugged in?
- Is the power cut off?
- Is there enough water?



➤ Spinning does not work

- Is the laundry spread out evenly in the washer?
- Is the washer set on a sturdy flat surface?



➤ Water is not supplied

- Is the water tap opened?
- Is the water cut off?
- Is the water supply hose or hose connection clogged?
- Is the water tap frozen?



If water is not supplied in 1 hour, a buzzer will sound, and the remaining time indicator will show "4E".

➤ Water is overflowed

- Restart after spinning.
- If the error sign still indicates, call agency.



➤ Water dose not drain

- Is the drain hose down?(No pump)
- Is the drain hose frozen?
- Is the drain hose clogged?



If the water dose not drain in 15 minutes, a buzzer will sound, and the remaining time indicator will show "5E".

IN CASE THE NEED FOR SERVICING ARISES.

If any problem occurs with your products,do not hesitate to call any nearby.
Name, address, telephone number is required.



SPECIFICATIONS

POWER CONSUMPTION	WASH	426W	STANDARD WATER LEVEL	MAXIMUM	75 l
	SPIN	270W		HIGH	62 l
MED				53 l	
LOW				42 l	
EXTRA LOW				28 l	
DIMENSIONS(mm)	W605xD665xH1000				
WEIGHT	42 kg	WATER USAGE		195 l	
WATER PRESSURE	0.05~0.78 MPa (0.5 ~ 8.0 kg · f/cm ²)		PULSATOR ROTATING SPEED		100 rpm
WASHING TYPE	Stirring Type	SPIN SPEED		680 rpm	